

Soredex Digora

Integration Instructions for ViewPoint

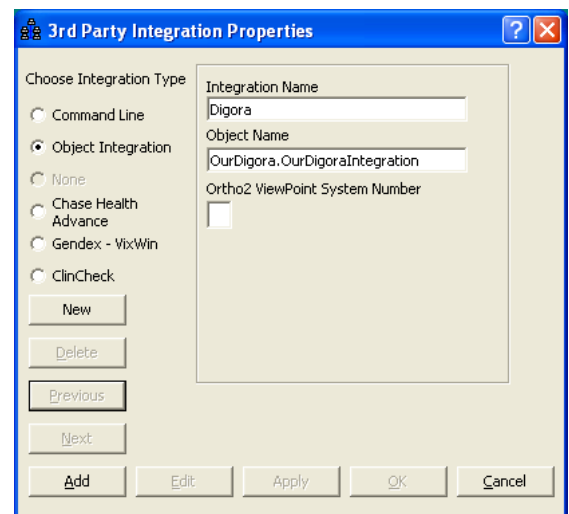


Digora® software is used with a variety of Soredex radiography machines. This integration allows you to start the Digora software from a ViewPoint patient record. You can also update and add new patients to Digora from ViewPoint. These features require the ViewPoint Third Party Integration.


Setup


Before you begin, be sure both ViewPoint and the Digora software are installed properly.

- 1 From the ViewPoint Main Menu, click **[Tools & Utilities]** and then **[Third Party Integration]**.
Note: If you receive a CD-Key mismatch message, contact your Ortho2 Systems Consultant.
- 2 Click **[New]**.
- 3 Select **Object Integration** for the integration type.
- 4 Enter "Digora" for the **Integration Name**.
- 5 Enter "OurDigora.OurDigoraIntegration" for the **Object Name**.
- 6 Click **[Add]** and **[OK]**.



Using the Integration

With a patient loaded, click the **Third Party Integration**  button in the ViewPoint toolbar and select **Digora** to open Digora to the patient. If the patient does not exist in Digora, it will open to a blank record.

Whenever you update a patient's first name, middle initial, last name, or patient ID in ViewPoint or add a new patient to ViewPoint, it is easy to update Digora with this information. Simply click the 3rd Party **Update/New** button  in the upper right hand corner of the patient folder. This button will also open Digora to the patient.

Contact

Digora
Soredex
300 West Edgerton Avenue
Milwaukee, WI 53207
www.soredexusa.com
(800) 235-8854

ViewPoint
Ortho2
1107 Buckeye Avenue
Ames, IA 50010
www.ortho2.com
(800) 346-4504 or (515) 233-1026