

# ScreenPlay

Integration Instructions for Edge Imaging for ViewPoint



Ortho2 and ScreenPlay Technologies have developed a system that integrates ViewPoint with ScreenPlay. ScreenPlay can be started from within a ViewPoint patient record. The patient's images and information from the patient's findings are used to create a protocol within ScreenPlay. When ScreenPlay is closed, the protocol is recorded in the patient's ViewPoint correspondence history. These features require the ViewPoint Third Party Integration.

## Setup

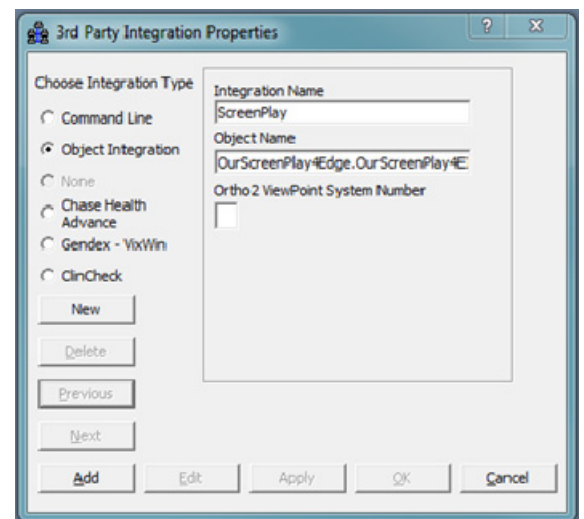
Before you begin, be sure ViewPoint and ScreenPlay are both installed. ScreenPlay needs to be run once before using the integration. ViewPoint needs to be version 8.0.4860 or higher. ScreenPlay needs to be version 4.0 or higher.

The patient's images must be stored in Edge Imaging, VistaDent, or Dolphin Imaging and be accessible from the computer using the ScreenPlay integration. The **Path to Images** in the *Imaging Package Properties* must be set correctly. If you are unable to view patients' images on the Patient tab at this computer, refer to the Edge Imaging or imaging integration documentation or call Ortho2 Software Support. Failure to meet this requirement will cause an error when attempting to use the integration.

## Third Party Integration

These steps must be followed on each station where you would like to use the integration.

- 1 From the ViewPoint **Main Menu**, click [**Tools & Utilities**] and then [**Third Party Integration**].  
*Note: If you receive a CD-Key mismatch message, contact your Ortho2 Systems Consultant.*
- 2 Click [**New**].
- 3 Select **Object Integration**.
- 4 Enter "ScreenPlay" for the **Integration Name**.
- 5 Enter "OurScreenplay4Edge.OurScreenplay4EI" for the **Object Name**.
- 6 Click [**Add**] and then [**OK**].



## Treatment Findings

For the integration to function properly, the findings in ViewPoint need to be set up correctly to relate to the protocols in ScreenPlay. These steps need to be followed once.

- 1 From the Main Menu, click [**System Tables**] and then [**Treatment**].
- 2 Select **Findings** and click [**OK**] (or double-click Findings).
- 3 Click [**Add Heading**] and create a heading titled "Patient Education".

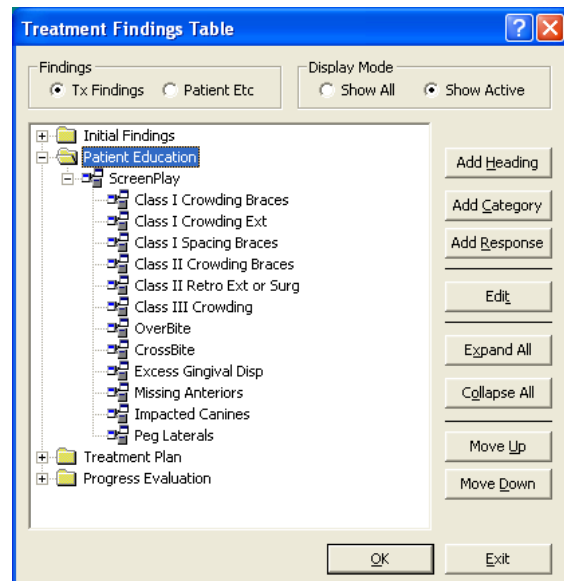
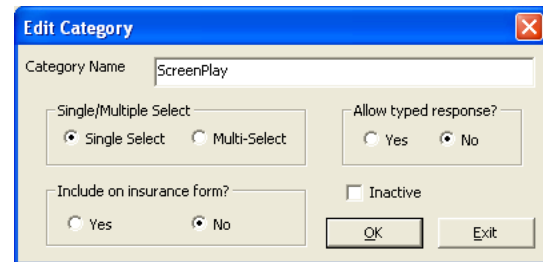
- 4 Click **[Add Category]** and create a category titled "ScreenPlay" (case sensitive) as show at right.
- 5 Click **[Add Response]** to create each response. The responses must exactly match your list of protocols in ScreenPlay and are case sensitive.

These are the protocols in the current version of ScreenPlay:

- Class I Crowding Braces
- Class I Crowding Ext
- Class I Spacing Braces
- Class II Crowding Braces
- Class II Retro Ext or Surg
- Class III Crowding
- OverBite
- CrossBite
- Excess Gingival Disp
- Missing Anteriors
- Impacted Canines
- Peg Laterals


Note: Existing responses can be edited, but **do not** change entries in your tables in such a way that changes the meaning. Any change made to an entry immediately updates all records in which that entry has been used. For example, changing "Herbst" to "Class II Crowding Braces" would update every patient with an existing Herbst response to Class II Crowding Braces.

- 6 Click **[OK]** to close the Treatment Findings table.



## Using the Integration

In the patient's folder, use the ScreenPlay treatment findings category to select the desired ScreenPlay protocol for the patient.

Then, with a patient loaded, click **Third Party Integration**  on the ViewPoint toolbar and select **ScreenPlay**. ScreenPlay will start with the current patient and the protocol selected on the Findings tab. The patient's images will be available on a "film strip" within ScreenPlay. (Be sure not to close ViewPoint.)

When ScreenPlay is closed, it will write back a "Presentation History" (a PDF document indicating what was presented to the patient) to the patient's correspondence history in ViewPoint. (ViewPoint MUST be running for this to be successful.)

With this integration, the 3rd Party **Update/New** button  in the patient folder has no function.

## Contact

### ScreenPlay

Solutions by Design, Inc.  
2109 West Bullard Avenue, #161  
Fresno, CA 93711  
www.solutionsbydesign.com  
(800) 888-4084 or (559) 436-8380

### ViewPoint

Ortho2  
1107 Buckeye Avenue  
Ames, IA 50010  
www.ortho2.com  
(800) 346-4504 or (515) 233-1026