

# ScanX

Integration Instructions for ViewPoint



The ScanX phosphor storage plate, when set up correctly, will function the same as a regular scanner within VP Imaging. No additional hardware or software is needed.

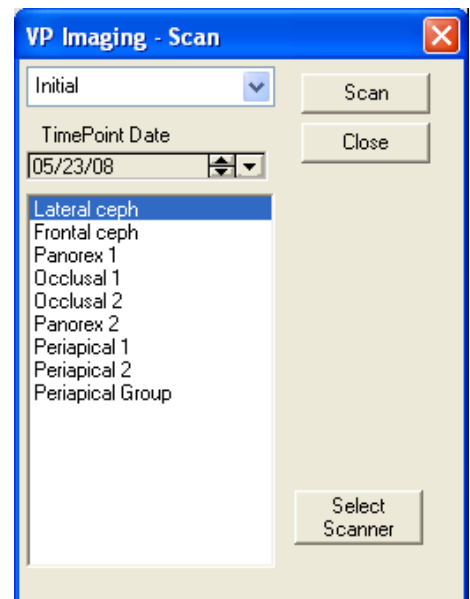
## Setup

Install the ScanX, appropriate software, and corresponding TWAIN driver. This should be accomplished by someone from Air Techniques.

For information on setting up VP Imaging, consult the VP Imaging documentation and contact Ortho2 Software Support with any questions.

## Using the Integration

- 1 Open a patient record in ViewPoint and click the VP Imaging tab.
- 2 Select the appropriate layout.
- 3 Click **[Scan]** to open the VP Imaging - Scan window.
- 4 Select the appropriate timepoint.
- 5 Select the appropriate image type.
- 6 Click **[Select Scanner]** to open the Select Scanner window.
- 7 On the **Twain** tab, select the ScanX device. Click **[OK]**.
- 8 Click **[Scan]** on the VP Imaging - Scan window. This will start your scanning software. For more information on proceeding, refer to the ScanX documentation.
- 9 A **Count=1** notation will appear beneath the **[Close]** button. Scan additional images or click **[Close]**.



Refer to the VP Imaging documentation for instructions on how to use the Image Editor.

## Contact

**Air Techniques, Inc.**  
ScanX  
1295 Walt Whitman Road  
Melville, New York 11747  
www.airtechniques.com  
(800) 247-8324

**ViewPoint**  
Ortho2  
1107 Buckeye Avenue  
Ames, IA 50010  
www.ortho2.com  
(800) 346-4504 or (515) 233-1026