

Planmeca Dimaxis

Integration Instructions for ViewPoint

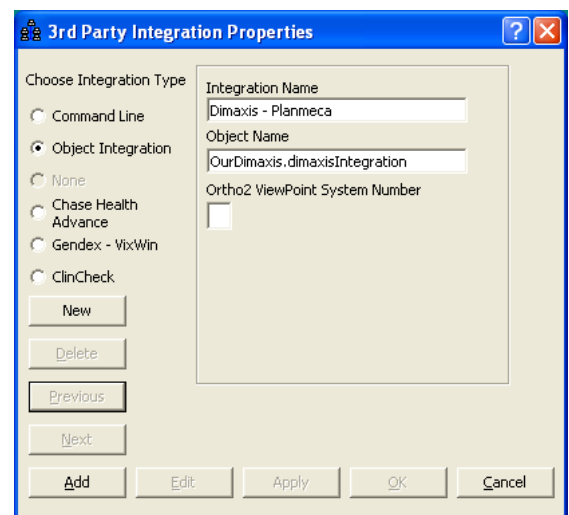


The ViewPoint integration with the Planmeca Dimaxis radiography software allows you to start the Dimaxis software from a ViewPoint patient record. You can also update and add new patients to Dimaxis from ViewPoint. These features require the ViewPoint Third Party Integration.


Setup


Before you begin, be sure both ViewPoint and the Dimaxis software are installed properly.

- 1 From the ViewPoint Main Menu, click **[Tools & Utilities]** and then **[Third Party Integration]**.
Note: If you receive a CD-Key mismatch message, contact your Ortho2 Systems Consultant.
- 2 Click **[New]**.
- 3 Select **Object Integration** for the integration type.
- 4 Enter "Dimaxis - Planmeca" for the **Integration Name**.
- 5 Enter "OurDimaxis.dimaxisIntegration" for the **Object Name**.
- 6 Click **[Add]** and **[OK]**.



Using the Integration

With a patient loaded, click the **Third Party Integration**  button in the ViewPoint toolbar and select **Dimaxis - Planmeca**. Dimaxis will open to the current patient.

Whenever you update a patient's first name, last name, birthdate, or patient ID in ViewPoint or add a new patient to ViewPoint, it is easy to update Dimaxis with this information. Simply click the 3rd Party **Update/New** button  in the upper right hand corner of the patient folder.

Contact

Dimaxis
Planmeca USA
100 N. Gary Avenue, Suite A
Roselle, IL 60172
www.planmecausa.com
(630) 529-2300

ViewPoint
Ortho2
1107 Buckeye Avenue
Ames, IA 50010
www.ortho2.com
(800) 346-4504 or (515) 233-1026