

OrthoProof DigiModel

Integration Instructions for ViewPoint



The ViewPoint integration with DigiModel™ viewing software from OrthoProof USA™ will allow you to start the DigiModel software from a ViewPoint patient record and view that patient's models. These features require the ViewPoint Third Party Integration.

Setup

Before you begin, be sure both ViewPoint and DigiModel are installed properly.

ViewPoint

These steps must be followed on each station where you would like to use the integration.

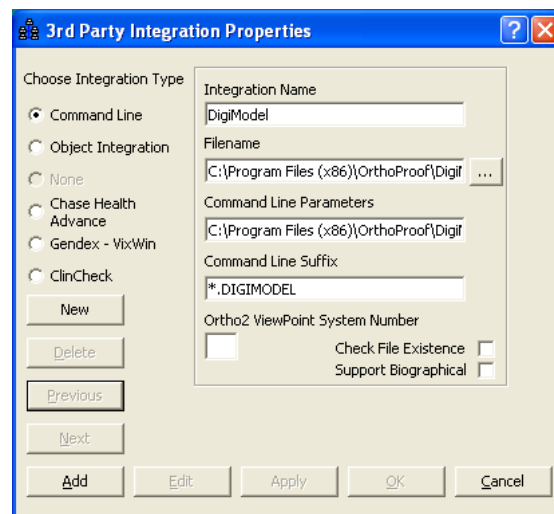
- 1 From the ViewPoint Main Menu, click **[Tools & Utilities]** and then **[Third Party Integration]**.

Note: If you receive a CD-Key mismatch message, contact your Ortho2 Systems Consultant.

- 2 Click **[New]**.
- 3 Select **Command Line** for the integration type.
- 4 Enter "DigiModel" as the **Integration Name**.
- 5 For the **Filename**, use [...] to navigate to the **DigiModel.exe** and select it.
- 6 In the **Command Line Parameters** field, enter the location of the DigiModel database.
- 7 Enter "*.DIGIMODEL" as the **Command Line Suffix**. This is case sensitive.

Note: Leave the Ortho2 ViewPoint System Number blank. Do not select Check File Existence or Support Biographical.

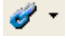
- 8 Click **[Add]** and **[OK]**.



DigiModel

Patients will need to be entered in the DigiModel database with the same patient ID they are assigned in ViewPoint. There is an Patient ID field to fill out when the impressions are sent to OrthoProof.

Using the Integration

To open DigiModel from a ViewPoint patient record, simply click the **Third Party Integration**  button in the ViewPoint toolbar and select **DigiModel**. DigiModel will start and automatically display the current patient's models. If that patient does not exist in the DigiModel database, then DigiModel will display a message that the patient does not exist.

With this integration, the 3rd Party **Update/New** button  in the patient folder has no function.

Contact

DigiModel

OrthoProof USA
5620 Venice Ave NE, Suite G
Albuquerque, NM 87113
www.orthoproofusa.com
(877) 924-0444

ViewPoint

Ortho2
1107 Buckeye Avenue
Ames, IA 50010
www.ortho2.com
(800) 346-4504 or (515) 233-1026