

# Motion View

Integration Instructions for ViewPoint



The ViewPoint integration with Motion View allows you to start the Motion View software from a ViewPoint patient record and go directly to that patient's record. These features require the ViewPoint Third Party Integration.

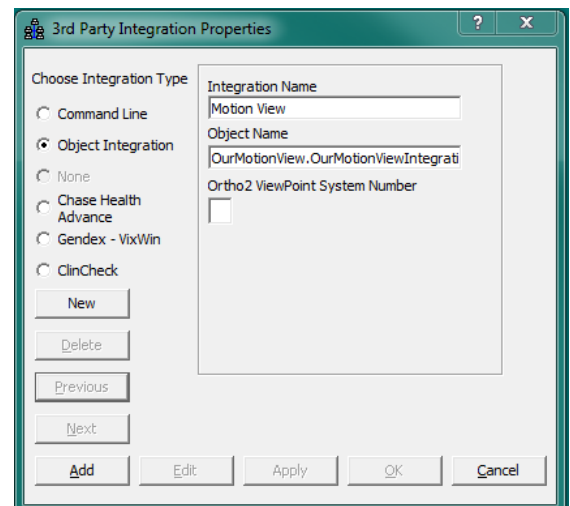
## Setup

Before you begin, be sure both ViewPoint and the Motion View software are installed properly.

## ViewPoint

These steps must be followed on each station where you would like to use the integration. ViewPoint minimum version is 6.0. 4300.



- 1 From the ViewPoint Main Menu, click **[Tools & Utilities]** and then **[Third Party Integration]**.  
*Note: If you receive a CD-Key mismatch message, contact your Ortho2 Systems Consultant.*
- 2 Click **[New]**.
- 3 Select **Object Integration** for the integration type.
- 4 Enter "Motion View" for the **Integration Name**.
- 5 Enter "OurMotionView.OurMotionViewIntegrati" for the **Object Name**.
- 6 Click **[Add]** and **[OK]**.



## Motion View

Patients need to have the same patient ID in the Motion View database that they have in ViewPoint.

## Using the Integration

With a patient loaded, click the **Third Party Integration**  button in the ViewPoint toolbar and select **Motion View** to open Motion View to the patient. If the patient does not exist in Motion View, it will be added. (With this integration, the 3rd Party **Update/New** button  in the patient folder has no function.)

## Contact

**Motion View**  
Motion View Software, LLC.

www.motionview3d.com  
(423) 451-7205

April 18, 2014

**ViewPoint**  
Ortho2  
1107 Buckeye Avenue  
Ames, IA 50010  
www.ortho2.com  
(800) 346-4504 or (515) 233-1026